



## SKYWIN CONFIGURATION MANUAL

### Contents

<b>SKYWIN CONFIGURATION MANUAL</b> .....	<b>1</b>
Document information .....	1
Revision history .....	1
Connect SkyWin to a database.....	2
Using MS Access locally .....	2
Using MS Access in a network (more than one computer).....	3
Using an ADO database (more than one computer).....	4
License handling in SkyWin .....	6
Entering a license number.....	6
Restrictions when using a Demo license key .....	6
Configure SkyWish.....	7
What is SkyWish.....	7
Steps to configure SkyWish .....	7
Configure SkyView.....	8
What is SkyView .....	8
Steps to configure SkyView .....	8
Configure SkyCalls .....	9
What is SkyCalls.....	9
Steps to configure SkyCalls .....	9

### Document information

This document describes processes regarding configuring SkyWin® XP and its components. The information in this document applies to SkyWin® XP version 9.0.5 and above.

### Revision history

<i>Date</i>	<i>Version</i>	<i>Description</i>	<i>Author</i>
2010-05-06	1.0	First edition	Jesper Löfberg
2010-04-06	1.1	Added information about <a href="#">SkyCalls</a> and <a href="#">license handling</a>	Jesper Löfberg
2010-04-14	1.2	Footnotes regarding the user <b>Administrator</b>	Jesper Löfberg
2010-05-06	1.3	Added details about ADO database installation	Jesper Löfberg
2011-03-13	1.4	Updated for SkyWin 9.1	Jesper Löfberg

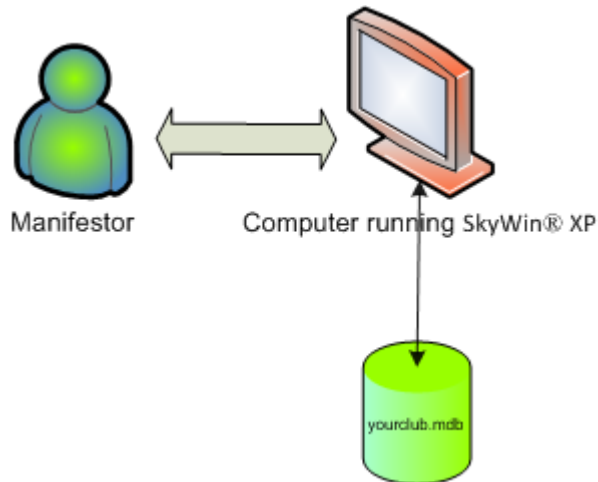


## Connect SkyWin to a database

There are several options when deciding what kind of database engine you should use with SkyWin® XP. The default is to use a MS Access database, however performance and security issues could be better addressed using another database engine and connecting via ADO.

### Using MS Access locally

#### Setup diagram



#### Who this is for

Typically a small organization that is administrating less than a thousand jumps per year.

It's also useful for running SkyWin® XP at another location than the DZ, e.g. for training purposes.

#### How to accomplish the setup

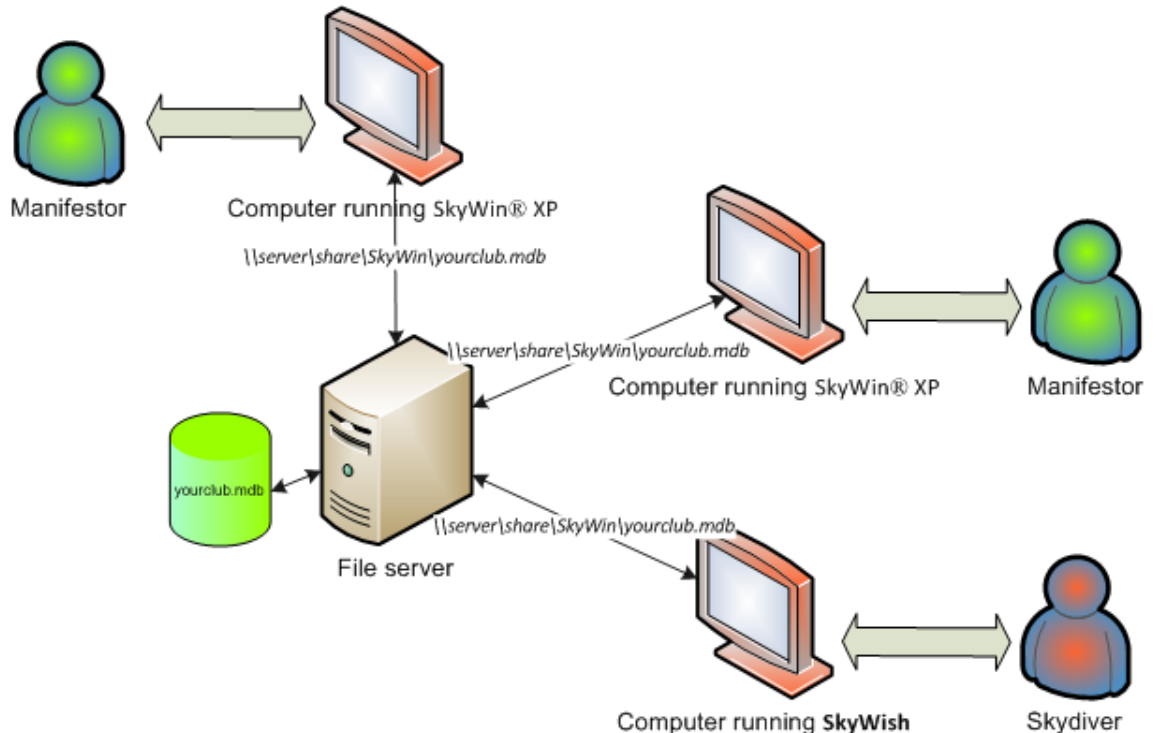
1. Put the database file, which normally is called *<yourclub.mdb>*, on the same computer as SkyWin® XP is installed. The location should be one where all users running SkyWin® XP have the access rights to write.
2. Start SkyWin® XP and select the menu *File | Open* and then select the database file.



# SkyWin configuration manual

## Using MS Access in a network (more than one computer)

### Setup diagram



### Who this is for

Typically a small organization that is administrating less than a couple of thousand jumps per year. More than one computer can run SkyWin® XP simultaneously, as well as *SkyWish*.

### How to accomplish the setup

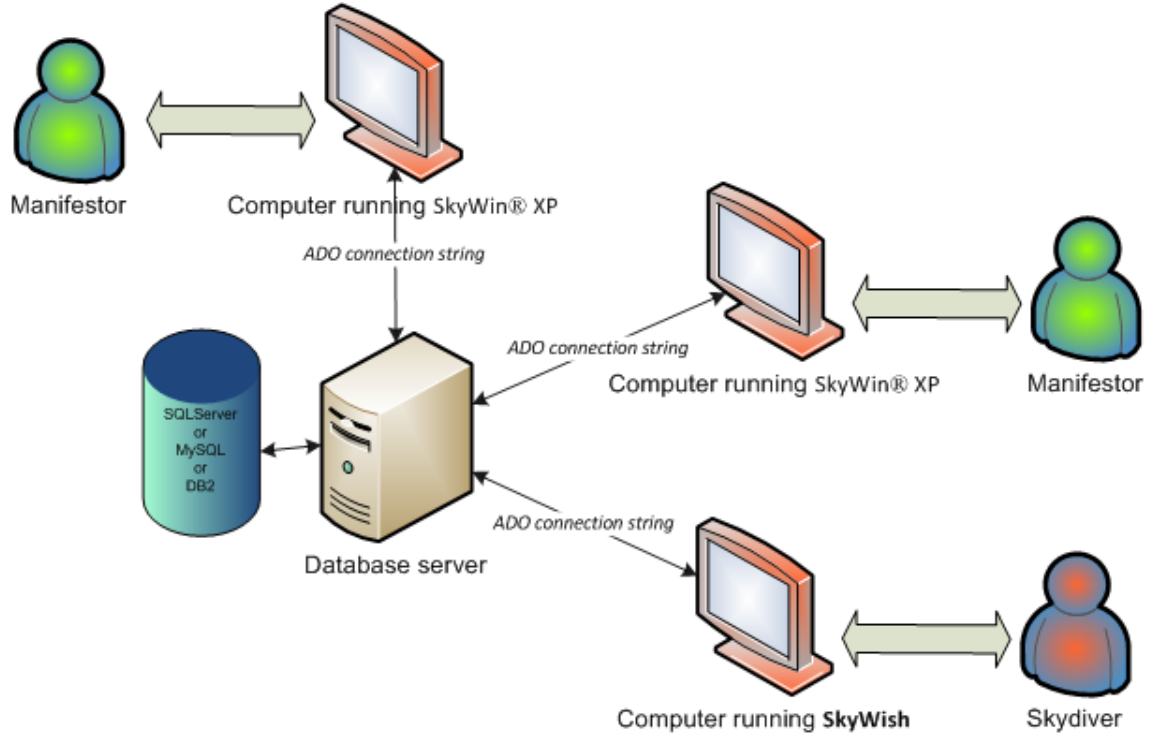
1. Put the database file, which normally is called *<yourclub.mdb>*, on a network share that is accessible from all computers that should run SkyWin® XP or *SkyWish*. The network share should be one where all users running SkyWin® XP have the access rights to write.
2. Start SkyWin® XP and select the menu *File | Open* and then select the database file from the network path, be sure to use the UNC naming convention, e.g. `\\server\sharename\SkyWin\yourclub.mdb`.
3. Repeat *task 2* for every computer that should run SkyWin® XP or *SkyWish*.



# SkyWin configuration manual

## Using an ADO database (more than one computer)

### Setup diagram



### Who this is for

Typically an organization that is administrating more than a thousand jumps per year. More than one computer can run SkyWin® XP simultaneously, as well as *SkyWish*. A higher level of control regarding database issues, including performance and security, gives the organization several advantages. A database administrator must be assigned.

A separate [upgrade task](#) has to be performed by the database administrator when SkyWin® XP is upgraded.

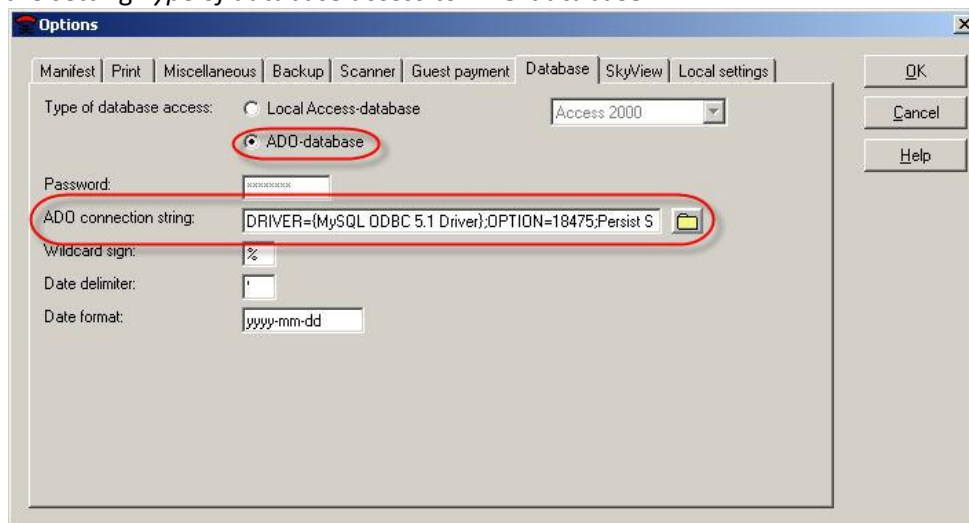
### How to accomplish the setup

1. Create a database on the database server. This task is not part of SkyWin installation and the database administrator must be responsible for this. SkyWinner will however deliver scripts for creating all objects in the database that are needed. The steps to [create a database can be found below](#).



# SkyWin configuration manual

2. Start SkyWin® XP and select the menu *File | Options | Database* and change the setting *Type of database access* to **ADO-database**.



3. Complete the *ADO connection string* either manually or by using the button to the right of the field.
4. Close the *Options* dialog, and restart SkyWin® XP in order for the changes to take effect.
5. If this is the first time you connect to the database, select the menu *File | Options | Initialize Database*.
6. Repeat *task 2-4* for every computer that should run SkyWin® XP or *SkyWish*.

## Installing an ADO database

1. All SQL for this task can be found at [skywin.se](http://skywin.se).
2. Create the database running the appropriate downloaded SQL named **<database\_engine>.ddl.create\_database.sql**. The file is an example and has to be edited in beforehand.
3. Create all tables running the appropriate downloaded SQL named **<database\_engine>.<skywinversion>.ddl.table\_create.sql**.
4. Create all relations running the appropriate downloaded SQL named **<database\_engine>.<skywinversion>.ddl.fk\_create.sql**.
5. Create necessary rows for starting SkyWin running the appropriate downloaded SQL named **<database\_engine>.<skywinversion>.<language>.isrt\_init.sql**.

## Upgrading an ADO database

1. All SQL for this task can be found at [skywin.se](http://skywin.se).
2. SkyWin® XP keeps track of which version each database is upgraded for and automatically makes the required changes to the database if necessary. Changes to the structure of the database is however not done for ADO databases and this must be done manually after SkyWin® XP has been upgraded to a newer version that requires database changes.



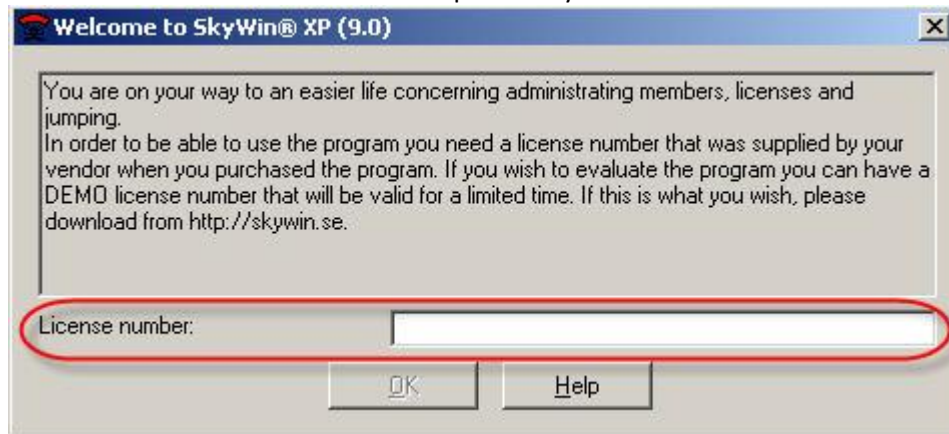
# SkyWin configuration manual

## License handling in SkyWin

SkyWin® XP needs a valid license in order to run. If you want to start SkyWin without a valid license you can download a Demo license key from [skywin.se](http://skywin.se).

### Entering a license number

The license number must be entered in SkyWin® XP. When SkyWin® XP starts it will ask you to enter the license number one isn't previously entered.



Enter a valid license number and press <enter>.

When you buy a license of SkyWin® XP you will get a valid license number from SkyWinner.

To exchange the current license number to another, e.g. when you want to exchange a Demo license key to the one you bought, start SkyWin® XP and select menu *Help | Enter license number*.

### Restrictions when using a Demo license key

SkyWin® XP will have full functionality for a period of time. The time is determined from the contents of the Demo license key. If the Demo license key is **DEMO-SKW-101002-16515** then SkyWin® XP will work until 2010-10-02 (2 October 2010).

- The splash screen when starting SkyWin® XP will be shown for a prolonged time of 4 seconds.
- The user **Demo** will be automatically logged on when starting SkyWin® XP.
- All prints will be marked as printed from a Demo version of SkyWin® XP.



## Configure SkyWish

### What is SkyWish

*SkyWish* lets skydivers manifest themselves on another computer than SkyWin® XP runs on, thus unburdening the Manifestor.

*SkyWish* is not a separate application, instead it is SkyWin® XP itself but started with the parameter "-skywish".

Separate access rules are in effect when running *SkyWish* and the main application SkyWin® XP is hidden.

You have to run *SkyWish* on another computer than SkyWin® XP.

### Steps to configure SkyWish

1. Perform all necessary steps to install SkyWin® XP on every computer that should either run SkyWin® XP or *SkyWish*.
2. Start SkyWin® XP on the computer that shall run *SkyWish*.
3. Log on SkyWin® XP with a user that have *access rights Register responsible* – menu *File | Log on*<sup>1</sup>.
4. Open the same database as SkyWin® XP uses, see [Connect SkyWin to a database](#).
5. Select the menu *File | Options* and make other (optional) desired changes.
6. Close SkyWin® XP and you are ready to start *SkyWish*, a shortcut is located under *Start | All Programs | SkyWin XP Tools*.

---

<sup>1</sup> In the DEMO database the user *Administrator* can be used, without password.



# SkyWin configuration manual

## Configure SkyView

### What is SkyView

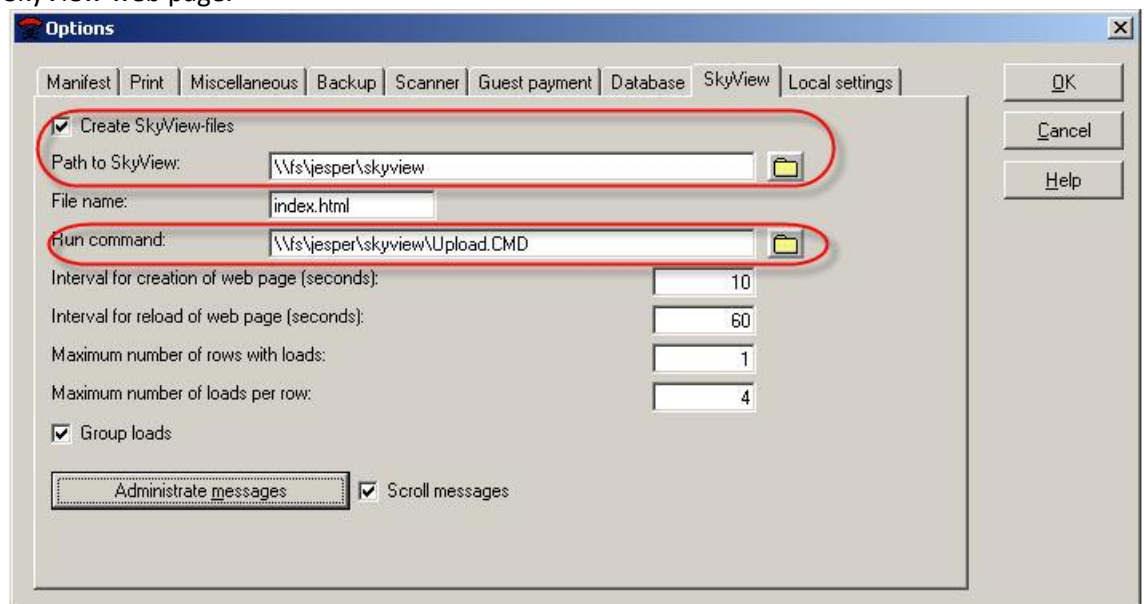
*SkyView* is a web page showing upcoming loads and jumpers.

*SkyView* is designed to be shown on a screen where all waiting skydivers, tandem passengers and others can view and see when it's time to skydive.

*SkyView* is generated from SkyWin® XP on a regular basis, based on settings.

### Steps to configure SkyView

1. Start SkyWin® XP.
2. Log on SkyWin® XP with a user that have *access rights Register responsible* – menu *File | Log on*<sup>2</sup>.
3. Select the menu *File | Options | SkyView* and change the setting *Create SkyView-files* so that it is selected.
4. Enter the path where to store the SkyView web page, select a path to a network share that can be used from the computer that will be showing the SkyView web page.



5. Optionally you can enter a *Run command* that will be executed directly after each creation of the SkyView web page. This can be handy if you want to automate a copy or upload of the SkyView web page to another location or web server.
6. Go to the computer that will be showing the SkyView web page and open *index.html* from selected path, open in full screen. The page will refresh periodically, based on the setting *Interval for reload of web page*.

<sup>2</sup> In the DEMO database the user *Administrator* can be used, without password.



## Configure SkyCalls

### What is SkyCalls

*SkyCalls* is a small utility which can help the manifestor, or another person, making calls for loads. It keeps track of upcoming loads and lets the user know when it is time to make a call.

*SkyCalls* operates together with SkyWin® XP, but can be run a separate computer.

### Steps to configure SkyCalls

1. Perform all necessary steps to install SkyWin® XP on every computer that should either run SkyWin® XP or *SkyCalls*.
2. Start SkyWin® XP on the computer that shall run *SkyCalls*.
3. Log on SkyWin® XP with a user that have *access rights Register responsible* – menu *File | Log on*<sup>3</sup>.
4. Open the database in SkyWin® XP, see [Connect SkyWin to a database](#). *SkyCalls* will only work if SkyWin® XP has opened the database successfully at least one time.
5. Close SkyWin® XP and you are ready to start *SkyCalls*, a shortcut is located under *Start | All Programs | SkyWin XP Tools*.

Load	30min	15min	Take off
HERCULES / 1	06:30	06:45	07:00
HERCULES / 2	07:30	07:45	08:00
HERCULES / 3	07:45	08:00	08:15
HERCULES / 4	08:00	08:15	08:30

<sup>3</sup> In the DEMO database the user *Administrator* can be used, without password.